



## ACCOMMODATIONS

- 42 storeys high with 613 spacious Two-Room Suites
- Free made-to-order breakfast and complimentary drinks and snacks every evening
- Fallsview and Presidential Suites
- 100 yards from the Brink of Niagara Falls
- Located beside Niagara Fallsview Casino and OLG Stage
- 1 block from the Niagara Falls Convention Centre
- Centrally located in the Fallsview Tourist District
- On-site restaurants: Starbucks® Coffee, TGI Fridays® Restaurant & Sports Bar Fallsview Dining in STK Steakhouse® and Lobby Lounge with Seasonal Patio



## MEETING FACILITIES & SERVICES

- Over 20,000 square feet of meeting/banquet space
- Professional meeting planners to assist with on-site/off-site arrangements and activities
- Fallsview banquet space includes private outdoor balcony
- All conference rooms consist of state-of-the-art built in audio/visual components, including interconnecting multiple screens with "simultaneous display" LCD projectors
- In-house sound, lighting and audio/visual services provided by Encore
- LCD projectors in each meeting room
- Earn Hilton Honors® Points
- Motorized projection screens
- High-speed wireless internet
- Self parking
- Room service
- Full business centre
- ATM machines



## Embassy Suites by Hilton Niagara Falls – Fallsview

905.356.3600 | 1 800 420 6107

6700 Fallsview Boulevard | Niagara Falls | ON | L2G 3W6

[embassysuitesniagara.com](http://embassysuitesniagara.com) | [sales@embassysuitesniagara.com](mailto:sales@embassysuitesniagara.com)



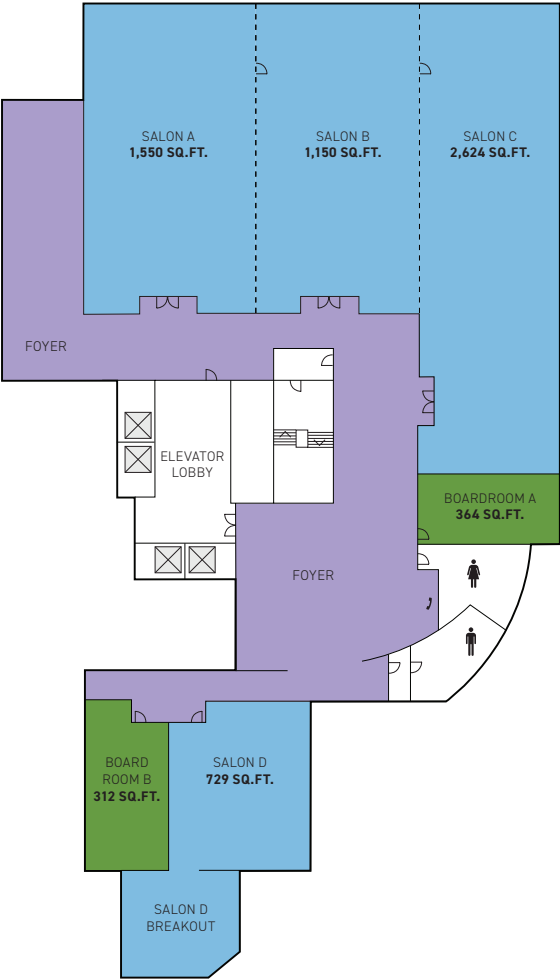
**EMBASSY  
SUITES**

by Hilton™

NIAGARA FALLS – FALLSVIEW

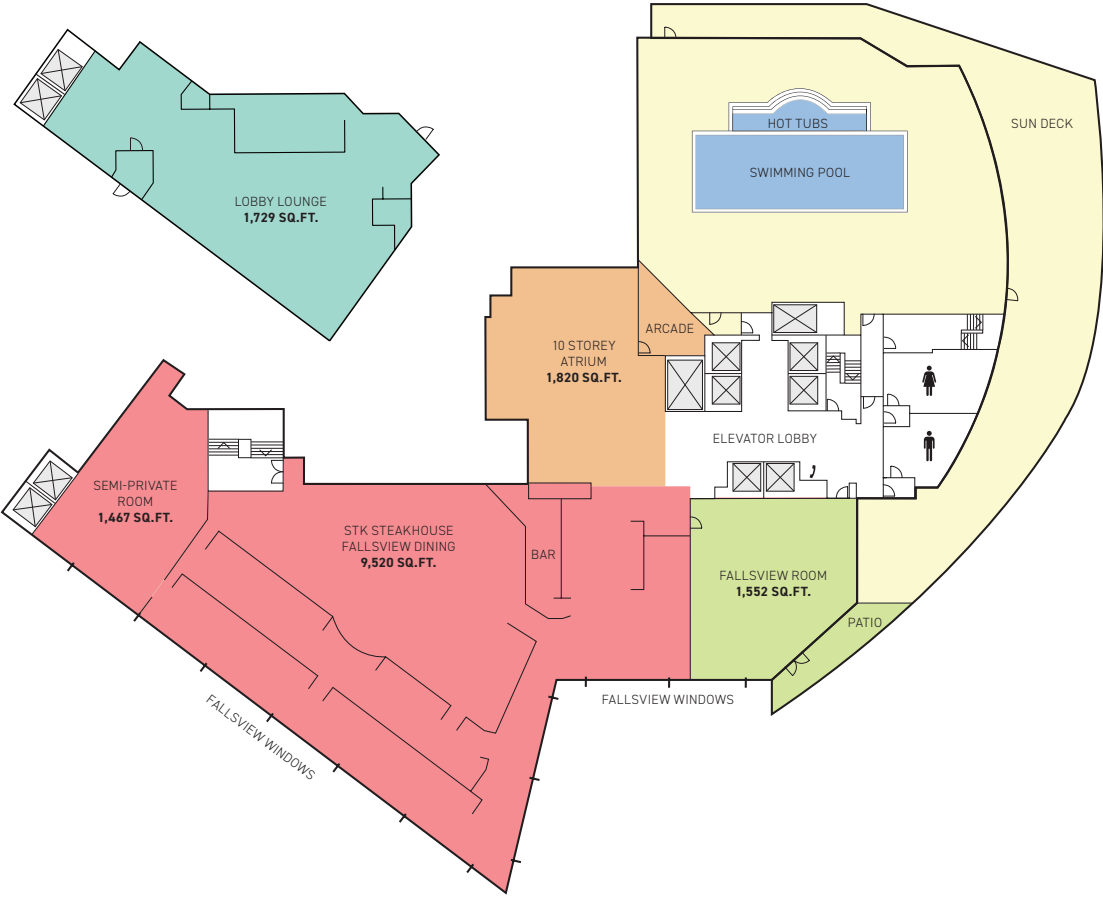


P1 CONFERENCE LEVEL



\*Not to scale

LEVEL 9 CONFERENCE LEVEL



\*Not to scale

MEETING SPACE CAPACITIES - TOTAL SPACE = 6,729 SQ.FT.

\*Salons A, B and C can be utilized as three separate rooms or combined as one large general session room.

MEETING ROOMS	DIMENSIONS	CEILING HEIGHT	SQUARE FOOT (sq.ft.)	THEATRE	CLASS ROOM	BOARD ROOM	U-SHAPE	RECEPTION	BANQUET	HOLLOW SQUARE	HALF ROUNDS
SALON A	31X50	9	1550	90	70	30	38	100	60	40	48
SALON B	23X50	9	1150	70	60	30	30	70	50	30	40
SALON C	32X82	9	2624	160	130	40	40	150	140	50	96
SALON A+B+C	-	9	5324	350	260	-	-	300	260	-	225
SALON A+B	-	9	2700	165	130	-	-	170	110	-	88
SALON B+C	-	9	3774	235	190	-	-	220	190	-	136
SALON D	27X27	8	729	45	30	20	20	50	40	24	32
BOARDROOM A	13X28	8	364	20	20	14	-	25	30	-	-
BOARDROOM B	13X24	8	312	-	-	12	-	-	-	-	-

MEETING SPACE CAPACITIES - TOTAL SPACE = 16,088 SQ.FT.

MEETING ROOMS	DIMENSIONS	CEILING HEIGHT	SQUARE FOOT (sq.ft.)	THEATRE	CLASS ROOM	BOARD ROOM	U-SHAPE	RECEPTION	BANQUET	HOLLOW SQUARE	HALF ROUNDS
STK STEAKHOUSE	-	-	9520	-	-	-	-	-	511	-	-
SEMI-PRIVATE ROOM	32x45	13	1467	-	-	-	-	-	70	-	-
FALLSVIEW ROOM	41x46	13	1552	-	-	-	-	50	30	-	-
10-STOREY ATRIUM	-	-	1820	-	-	-	-	200	100	-	-
LOBBY LEVEL LOUNGE	63x28	10	1729	-	-	-	-	100	50	-	-